



**SACHSEN-ANHALT**

Ministerium für  
Umwelt, Landwirtschaft  
und Energie

Implementation of the  
National Flood Protection  
Programm in the German  
River Basin District Elbe



# Content

---

- 1. Background**
- 2. The national Flood Protection Programm**
- 3. Current Status of Implementation ?**
- 4. Examples in the Elbe Basin**
- 5. Summary**



# Background – Flood in 2013

- bursting of levee at the village Fischbeck



Versuch der Schließung  
16.06.13 (Foto Jüpner)

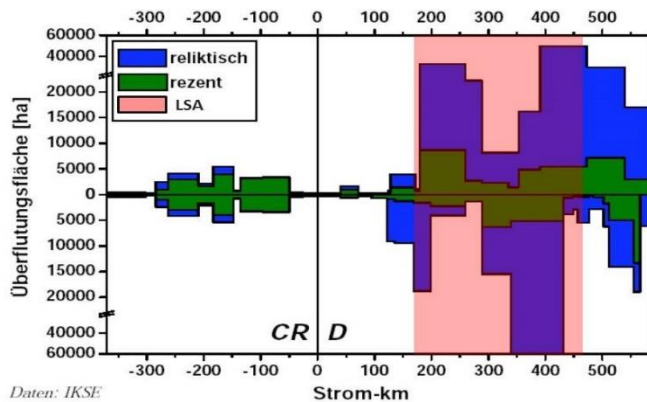


# Background

## - Losing of floodplain areas and retention areas in the Elbe region

...speed of flood waves and raise of water-level, in the region of Lutherstadt Wittenberg measures about 10 cm and in the region Wittenberge about 50 cm.

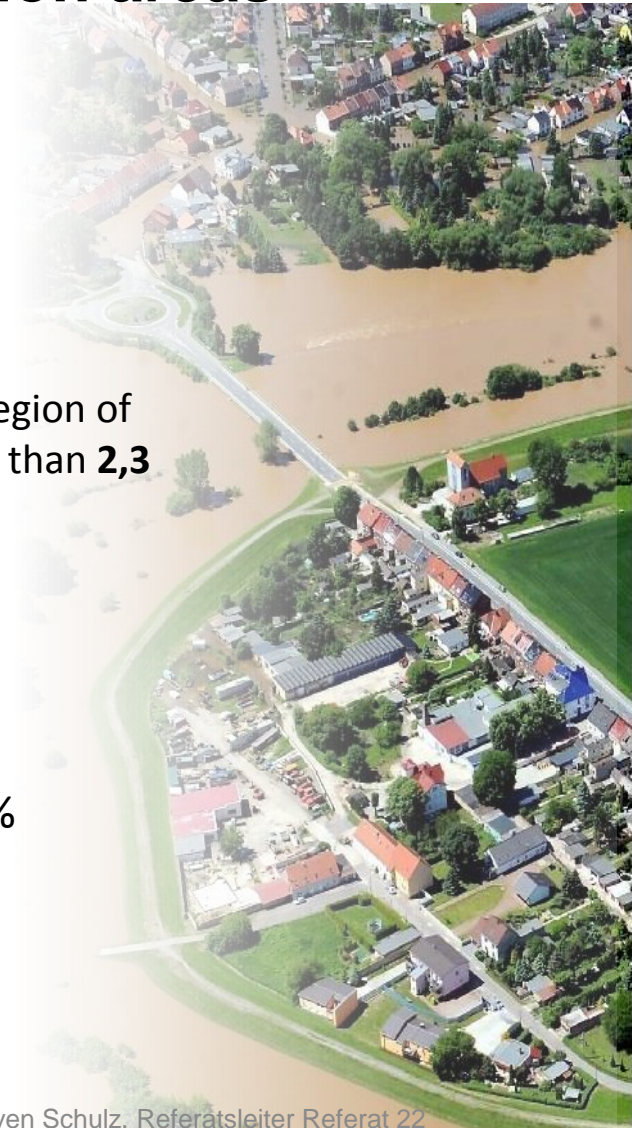
The loss of natural floodplains is approximately 570.000 ha in the region of Middle Elbe (this) which caused a loss of retention volume of more than **2,3 Mrd. m<sup>3</sup>**



Daten: IKSE

Quelle: IKSE 2001 <https://www.ikse-mkol.org/publikationen/hochwasserschutz/1/>

Loss of floodplain area at middle Elbe more than 80 %



# Objective

Integrated Approach for a sustainable Water Management

---

**Total damage of the flood 2013 in Germany about 8 Mrd. €**

## Work order of the environmental ministry conference:

Development of criterias and evaluation standards for the identification and prioritization to identify effective measures for the improvement of Flood protection

- **Extraction of Retention areas with**
- **Significant Effects and**
- **Elimination of weaknesses in levees**

- decision of the environment minister's Conference (02.09.13) to develop a national flood protection program
- october 2014: decision of the program on the meeting of the environment ministers



# National Flood Protection Programm - Priorisation

renovation of weak levees



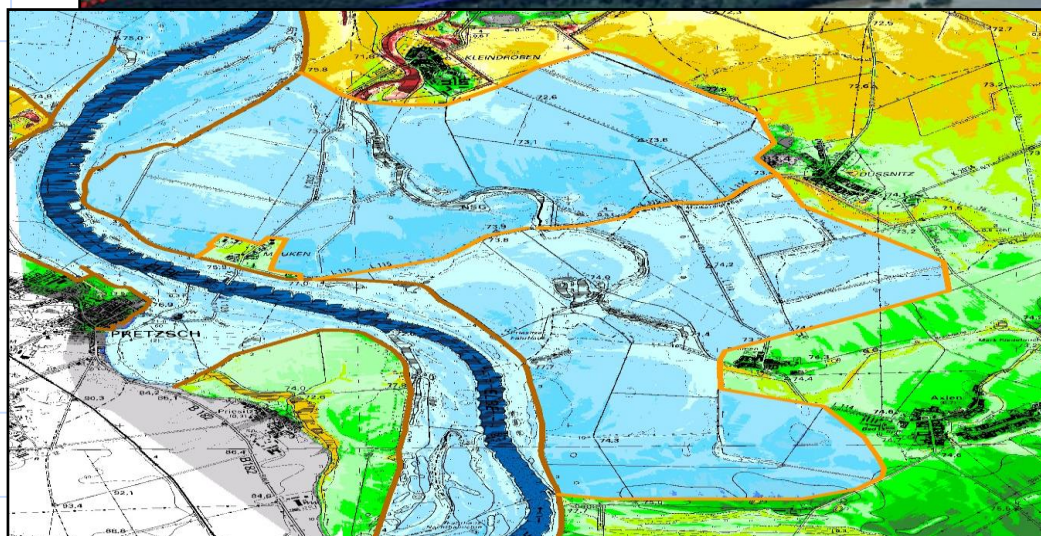
natural water retention  
measures eg. relocation of  
levees



controllable retention  
areas/polder



flood control basin



# National Flood Protection Program -Priorisation

- **Principles:** Over-regional impact/national importance
- **Effectiveness :**
  - Comforted Inhabitants, comforted Area (living, Commercial and Industry)
- **Synergies:**
  - **Objectives of the WFD, positive effects on flood plain areas, resilience against climate change**
- **Implementation :**
  - until 2021, until 2027, after 2027

<http://www.bmub.bund.de/themen/wasser-abfall-boden/binnengewaesser/wasser-binnengewaesser-download/artikel/nationales-hochwasserschutzprogramm>

# National Flood Protection Program - Financing

---

- Special financing frame (Sonder-GAK)
- Co-funding of budget for measures (federal state 60%, states 40%)

Financing with following approach:

Start 2015: *total volume 20 Mio. €*

2016-20: *total volume 100 Mio. €/a*

after 2021: *prolongation and extension)*



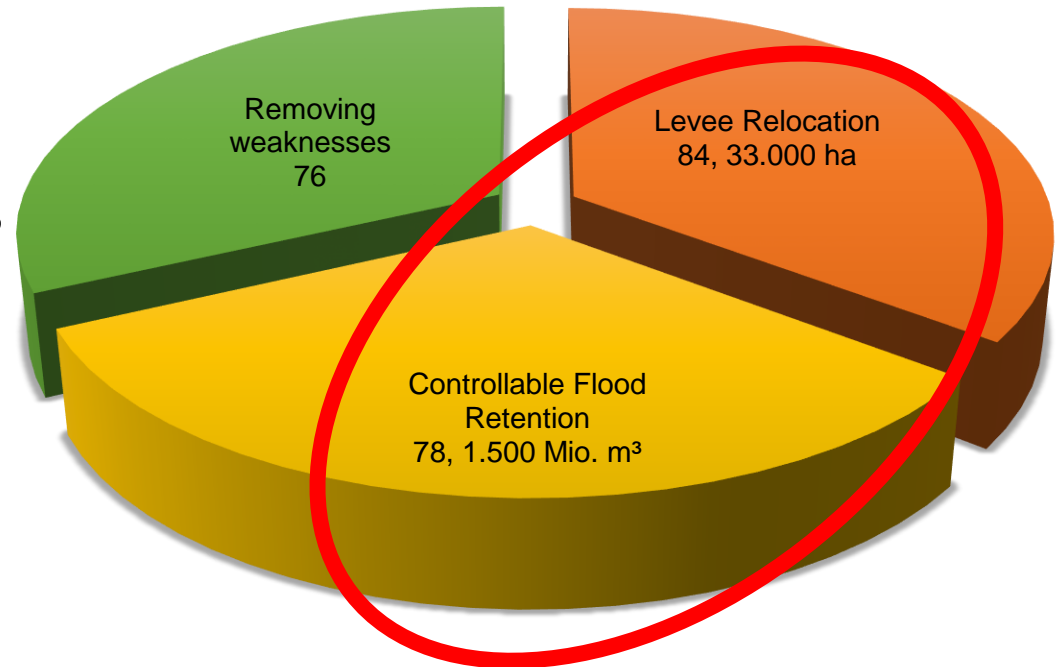


# National Flood Protection Program

## - Measures

classification of measures (MN) of  
NHWSP in :

- levee relocation 84
- controllable flood retention 78
- removing weaknesses 76

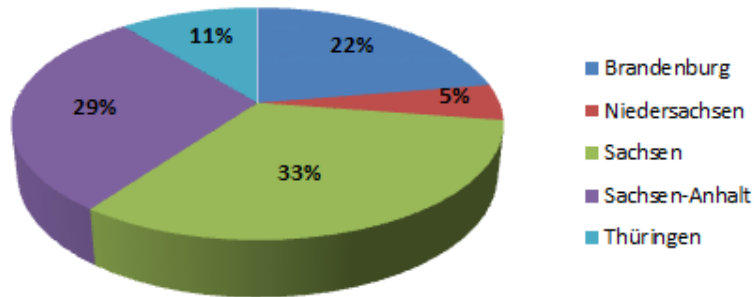


# National Flood Protection Program

## Financing status

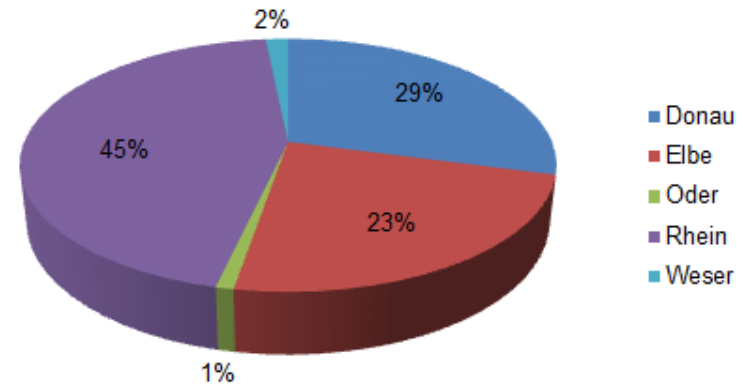
### Distribution of Costs [Mio. €] of the NHWSP on River Basin in Germany

Distribution of Cost in the Elbe Basin



**Total Cost**  
1.091.589.094,00 €

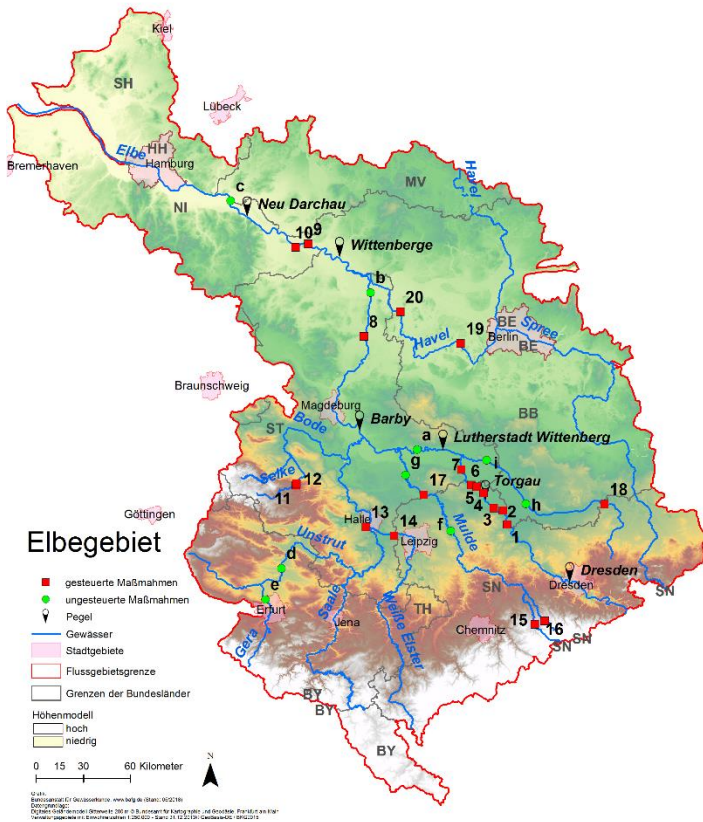
Total Cost in all German River Basins



**Total Cost**  
4.630.277.906,00 €

[Quelle: Anlage 1 zu TOP 7.2.2 der 155. LAWA-Vollversammlung am 14./15. März 2018]

# National Flood Protection Program general overview measures



Quelle: mit freundlicher Genehmigung der BfG

State Country	Number of Measures 2019	
	Levee Delionation (DRV)	Controlled flood retention (gHWR)
Brandenburg	1	5
Lower-Saxony	1	0
Saxony	1	9
Saxony-Anhalt	11	5
Thuringia	2	0
<b>Total <math>\Sigma</math></b>	<b>16</b>	<b>19</b>

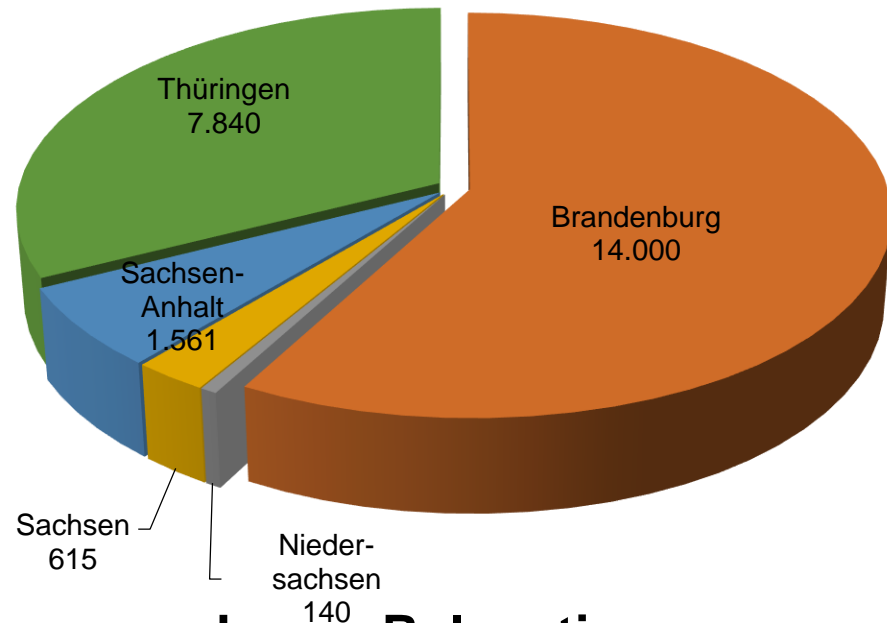
Quelle: Auszug aus Maßnahmenliste 2019 eNHWS



# National Flood Protection Program

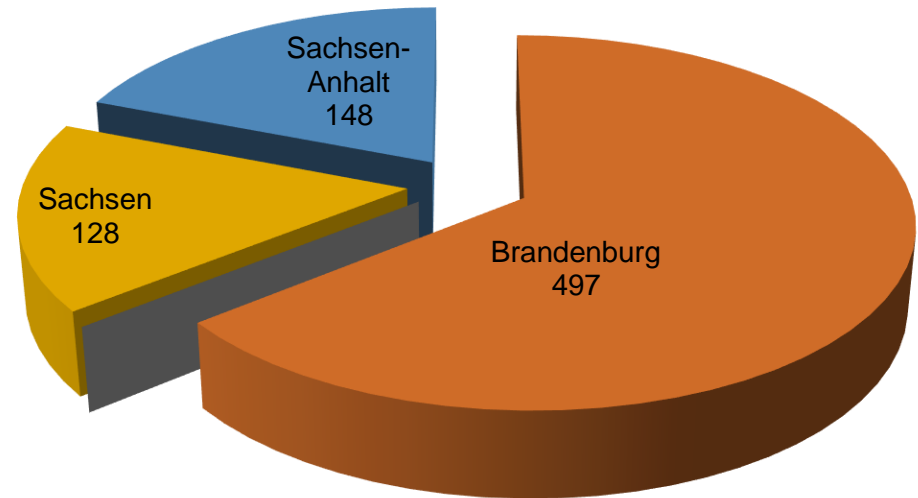
## size of measures

### Area DRV [ha]



**Levee Relocation**  
**Total: 24.156 ha**

### Volume gHWR [Mio. m<sup>3</sup>]



**Polder**  
**Total: 772 Mio. m<sup>3</sup>**

Quelle: Auszug aus Maßnahmenliste 2019 eNHWS

# National Flood Protection Program

## Prioritization of measures

- annual measure prioritization in two classes
- (Construction I; II – Planning)
- Criterias: Effectiveness, Synergies and Practicability

Category	Number of measures 2019 in the countries Brandenburg, Lower Saxony, Saxony, Saxony- Anhalt and Thuringia	
	Priority class I	Priority class II
Relocation Levee	9	6
Polder	7	9
<b>Σ</b>	<b>16</b>	<b>15 (+4)</b>

Quelle: Auszug aus Priorisierungsliste 2019 eNHWS

# Examples

## - Joint Project: Optimization of the Havel Polders

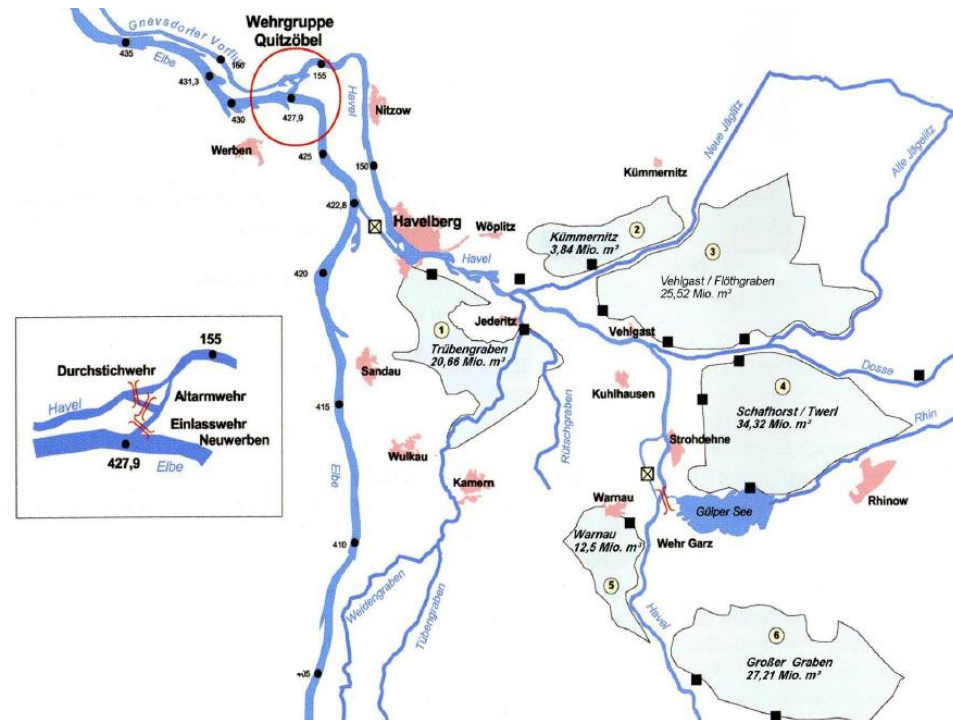
Upgrading Polders, polder levees and intake structures

**River:** Elbe/Havel

**Location:** cross border Project  
between Brandenburg, Berlin,  
Mecklenburg-Vorpommern,  
lower Saxony and Saxony  
Anhalt

**Size:** approx. 285 Mio m<sup>3</sup>

**Completion:** Results 2019



# Examples

## - Saxony Anhalt: Delineation of the Levee Sandau

**River:** Elbe

**Location:** Saxony- Anhalt

**Retention Room:**

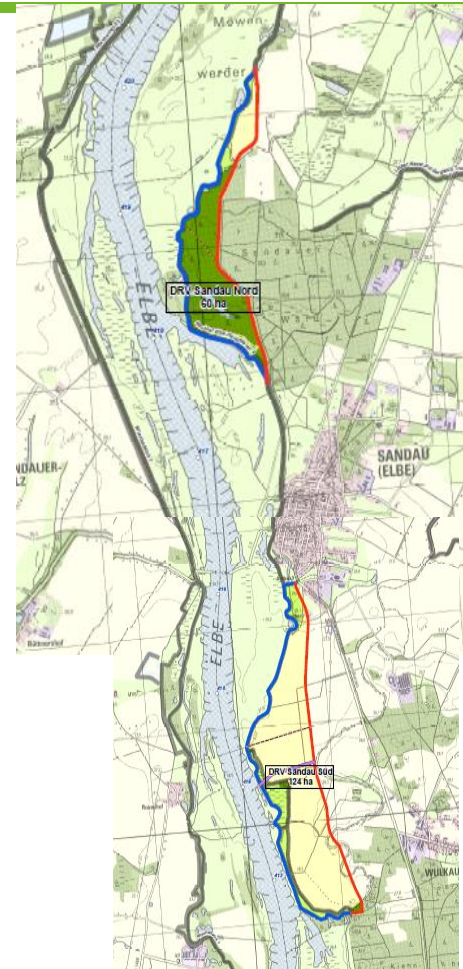
Sandau Nord 60 ha

Sandau Süd 120 ha

**Completion:**

Sandau Nord: nearly finished

Sandau Süd: 2020



# Examples

## - Brandenburg: Polder Lenzer Wische

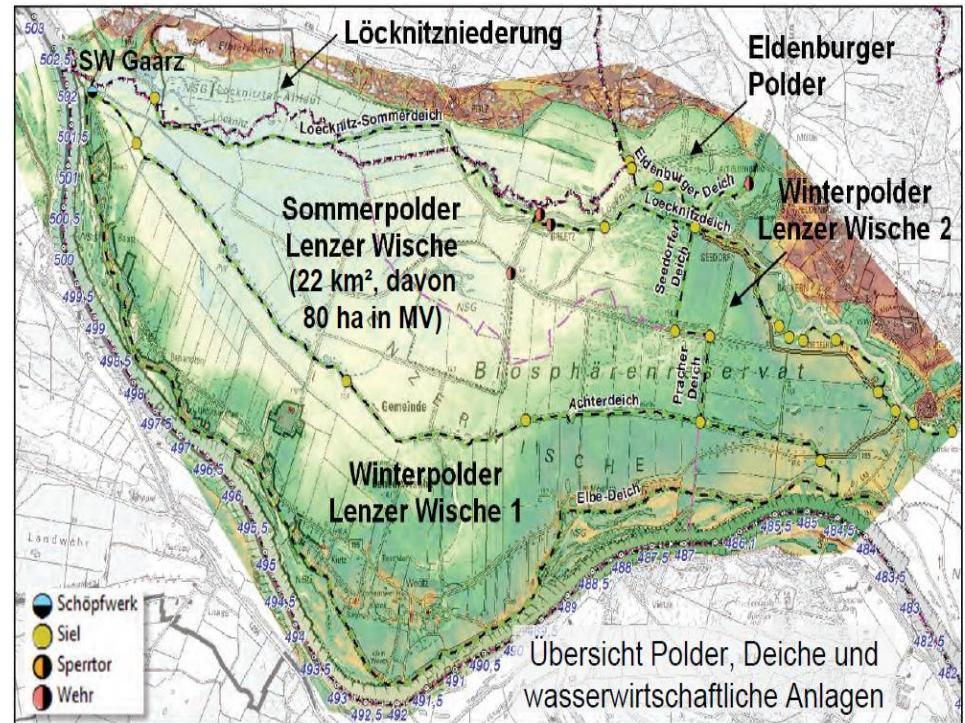
**River:** Elbe

**Location:** cross border project between Brandenburg, Mecklenburg-Vorpommern and Lower Saxony

**Size:** 22 km<sup>2</sup>

**Retention:** 43 Mio. m<sup>3</sup> (ca.25 cm)

**Completion:** in planning





# Examples

## - Thuringia: Delineation of the Levee System Unstrut

**River:** Unstrut

**Location:** Thuringia

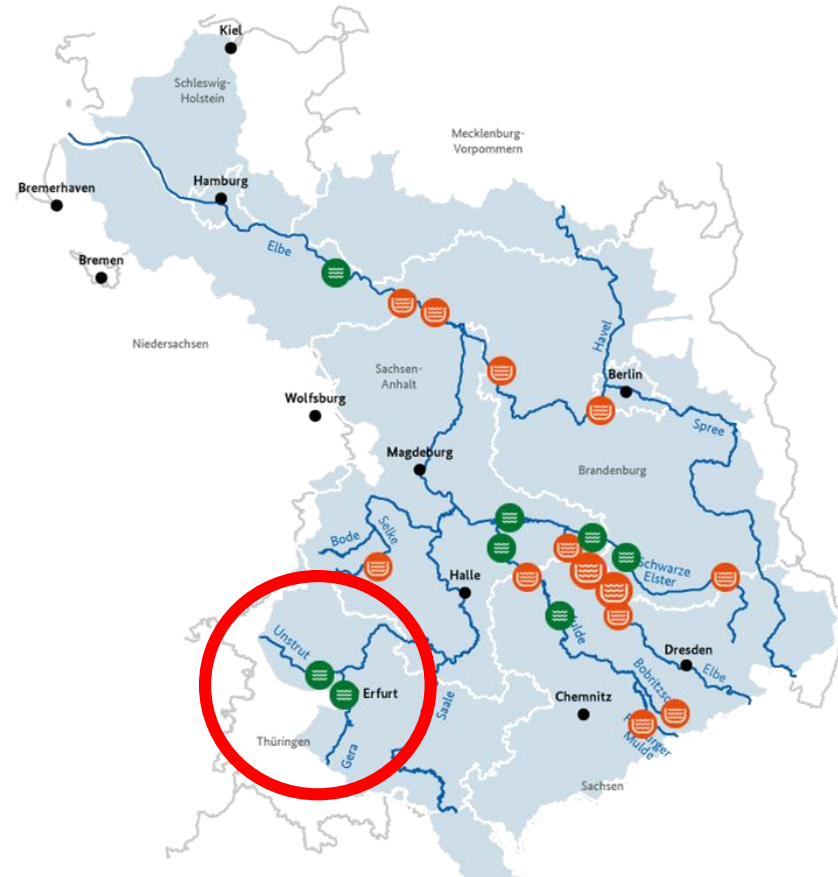
**Size:**

app. 7000 ha Retention Room

**Completion:** in planning

Projekte in der Elbe-Region

[zurück zur Übersicht](#)



# Examples

## - Saxony: Polder System Löbnitz/ Rösa

**River:** Mulde

**Location:** border Saxony/ Saxony-Anhalt

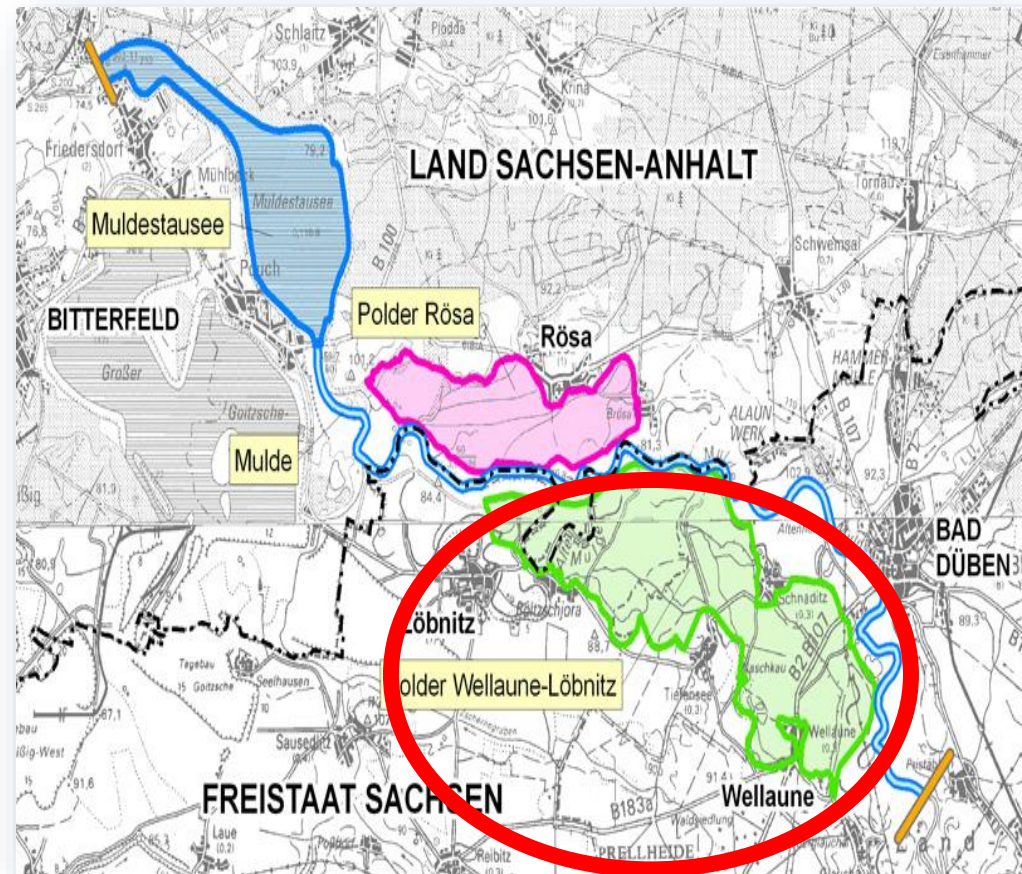
**Size:** 1430 ha Polder Löbnitz +  
520 ha (Polder Rösa)

**Retention:** 36 Mio. m<sup>3</sup> (ca. HQ 200)

**Completion:**

Polder Löbnitz: 2024

Polder Rösa: 2022/23



# Scientific Support and Evaluation

<b><u>Project</u></b>	„Analysis of the effects of the measures of the NFPP“	<b>Synergies of the NHWSP with nature conservation, water-ecological and climate policy objectives</b>
<b><u>Objective</u></b>	Establishment of the basis for prioritization of NHWSP measures over time	Derivation of synergies from NHWSP measures with regard to the objectives of the WFD, impact on floodplain conditions and stability against climate change
<b><u>Contractor</u></b>	BfG on behalf of UBA Federal Government and Federal States involved	BfN on behalf of BMU Federal Government and Federal States involved ( Institute for Eco-Research and Planung GmbH – Biota)
<b><u>Results</u></b>	2020	2022

# Information / Public Participation

<http://www.bmu.de/service/nationaler-hochwasserschutz/region-elbe/>

Ministerium Themen **Service** Presse

Region Donau Startseite Service Region Elbe

**MfU**  
Sitenübersicht  
Neue oder aktualisierte Fachbeiträge

**Aufgaben**  
Abfall  
Erdbeben  
Forst / Jagd  
Immissionsschutz / Klima  
Ländliche Entwicklung  
Landwirtschaft / Fischerei  
Natur  
Wasser  
LUIS-Daten

**Fachübergreifend**  
Politik  
Nachhaltigkeit  
Umweltschutz  
Wirtschaft und Bildung und A

**Presse und Öffentlichkeitsarbeit**  
Presse  
Öffentlichkeitsarbeit  
Veröffentlichung

**Verwaltung und Nationalpark U**  
Das Ministerium  
Das Landesamt  
Das Landesamt  
Landesbetrieb  
Nationalpark U

Nationales Hochwasserschutzprogramm  
Projekte/Maßnahmen an Elbe und Oder im Land Brandenburg  
Flutungspolder Lenzer Wische

Übersicht  
→ Themen von A..Z

Geodaten Wasser  
Download Geodatenätze  
Anwendungen und Dienste

Fachinformationen

**LHW** Landesbetrieb für Hochwasserschutz und Wasserwirtschaft Sachsen-Anhalt

Retentionsräume: Maßnahmenstandorte

**Standorte**  
Auf dieser Karte sind alle Deichrückverlegungen und Polder verortet. Die Maßnahmenblätter befinden sich in der Infoleiste nach Gewässern unterteilt. Die Maßnahmen in der Karte sind zusätzlich zu den einzelnen Maßnahmenblättern verlinkt.

**Polder:**

- Aulen-Maiken
- Calbe
- Elster-Luppe-Aue
- Kietz-Schonfeld
- Raba
- Rospitz-Beuchlitz-Passendorf
- Salitz
- Schalte-Blumenhof
- Tangermündung

**Deichrückverlegungen:**

- Buro
- Besenlaublingen
- Klichen
- Kietznick
- Kietz-Schonfeld Nord
- Kietz-Schonfeld Süd
- Markwerbener Weese
- Mäkers-Klöben
- Raguhn-Sietzau
- Sachau-Prisitz
- Sandau Süd

**Brandenburg:**  
e.g. Flood Polder Lenzer Wische

<https://mlul.brandenburg.de>

**Sachsen-Anhalt:**  
<https://www.geofachdate.nserver.de/de/standorte-retentionsraeume.html>



The journey is the reward